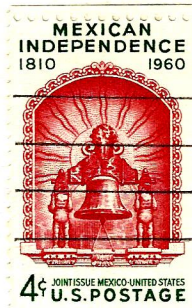
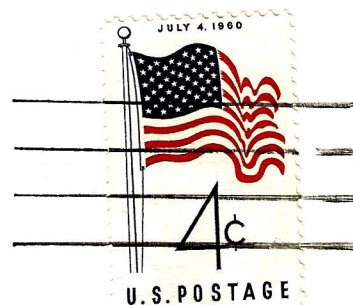


1960



MIDWEST PHILATELIC SOCIETY  
KANSAS CITY, MISSOURI



MIDWEST PHILATELIC SOCIETY  
KANSAS CITY, MISSOURI

# 1962



MIDWEST PHILATELIC SOCIETY  
STAMP EXHIBITION  
HOTEL MUEHLEBACH  
*Saturday and Sunday, Sept. 1 and 2, 1962*  
GRAND BALLROOM  
★  
ADMIT ONE

MIDWEST PHILATELIC SOCIETY  
*37th Anniversary Exhibition*  
KANSAS CITY, MISSOURI  
*Hotel Muehlebach, Saturday and Sunday,*  
*September 1st and 2nd, 1962*  
EVERYBODY WELCOME  
*Details available from General Chairman, W. E. Lasister*  
*10911 West 59th Street, Shawnee, Kansas, ME 1-4937*

On the following pages are samples of the different colors for the cachet used on postal cards and covers. The non-philatelic cover on the following page is signed by Postmaster Theodore "Ted" Bland.

**FAKE STAMPS A TOPIC.**  
**Expert to Address Philatelic Society Today.**

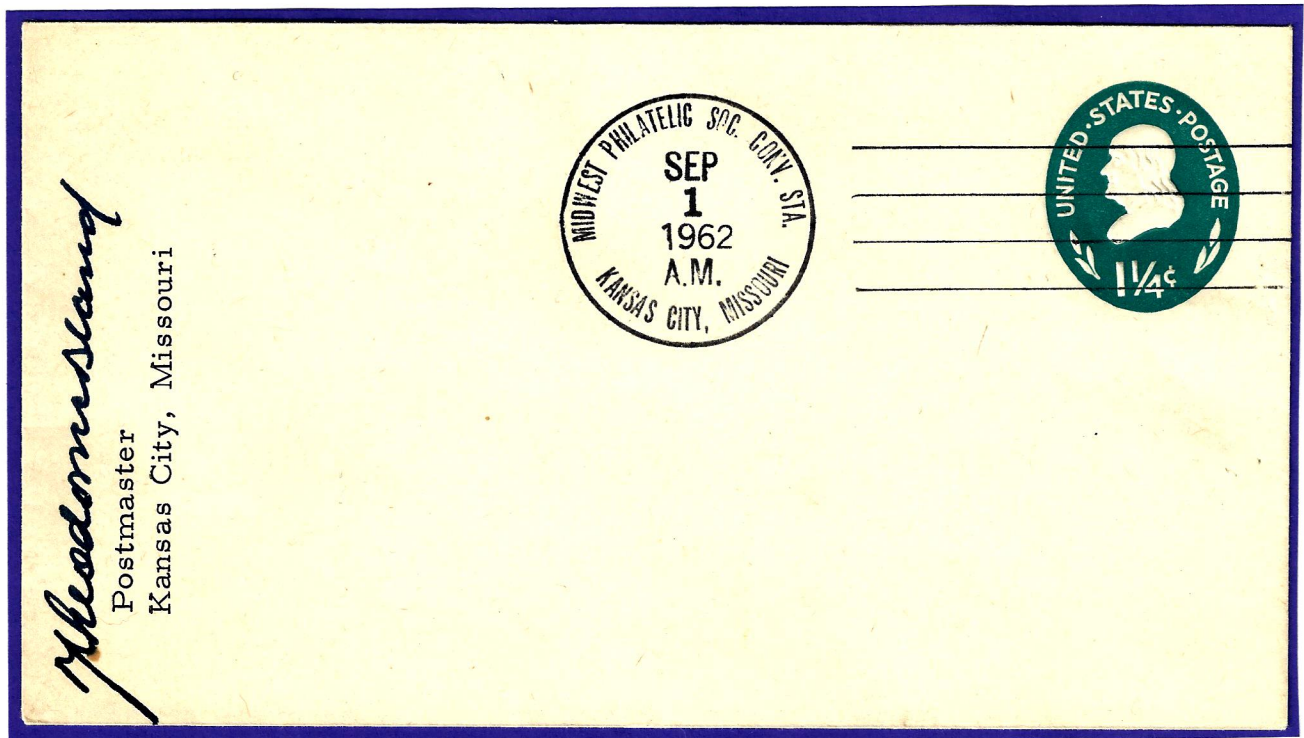
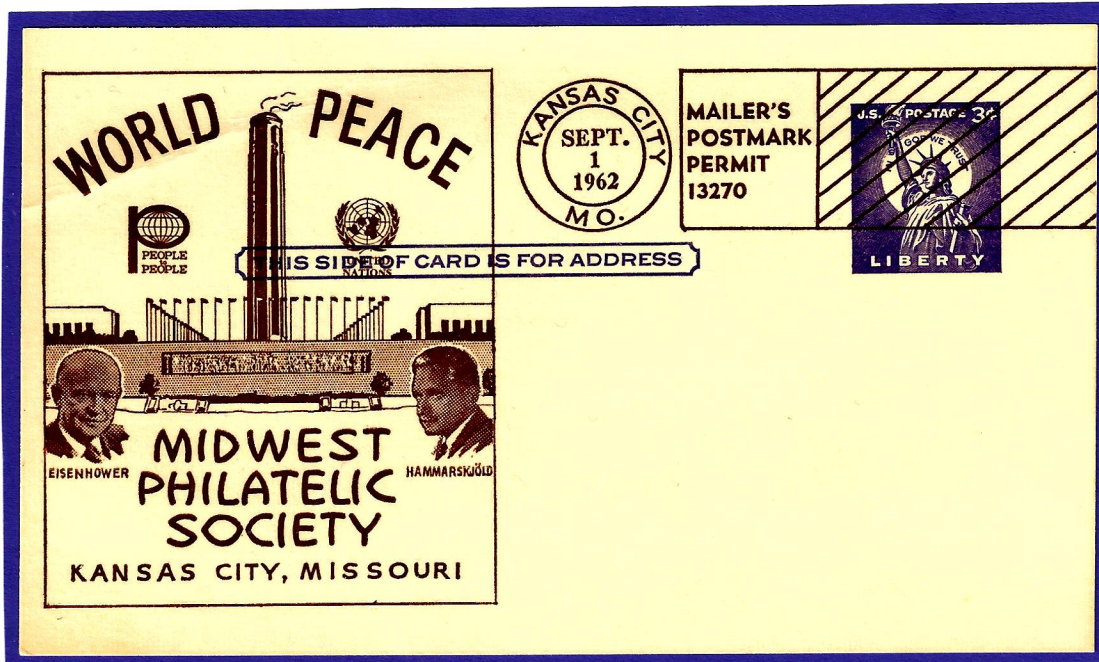
At 2 o'clock today a man who knows will tell stamp collectors how to detect forgeries in rare stamps.

The man is Harry Weiss of Springfield, Ill., an expert on philatelic laboratory work. He will speak at the 37th anniversary exhibition of the Midwest Philatelic Society at the Hotel Muehlebach.

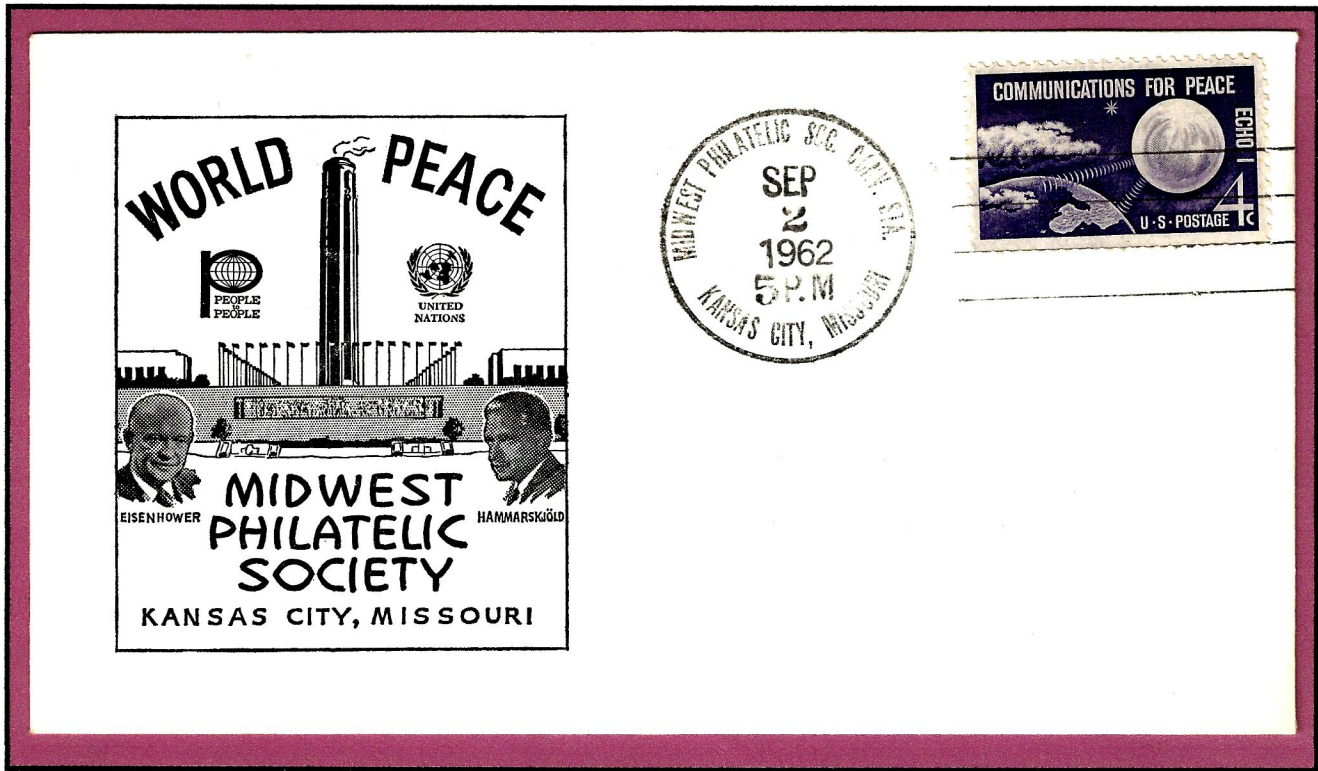
More than 600 persons visited the biennial show yesterday. About 400 display cases house exhibits ranging from 1840 English stamps to Civil war cover collections valued at \$10,000.

Prizes in 25 categories and for overall excellence will be presented today. Theme of the show is "World Peace," in honor of People to People headquarters here.

1962



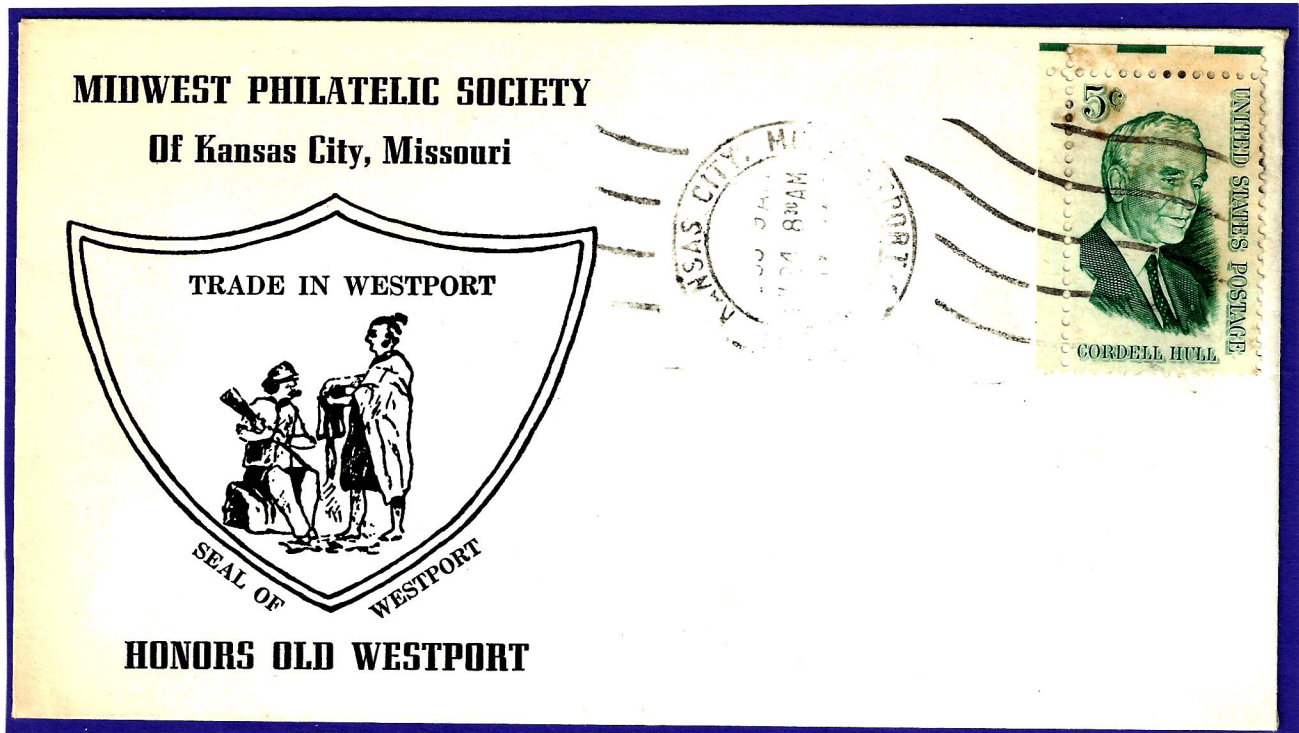
# 1962



The World Peace theme honored the world headquarters in Kansas City, Mo. of People to People International founded in 1956 by President Dwight Eisenhower.

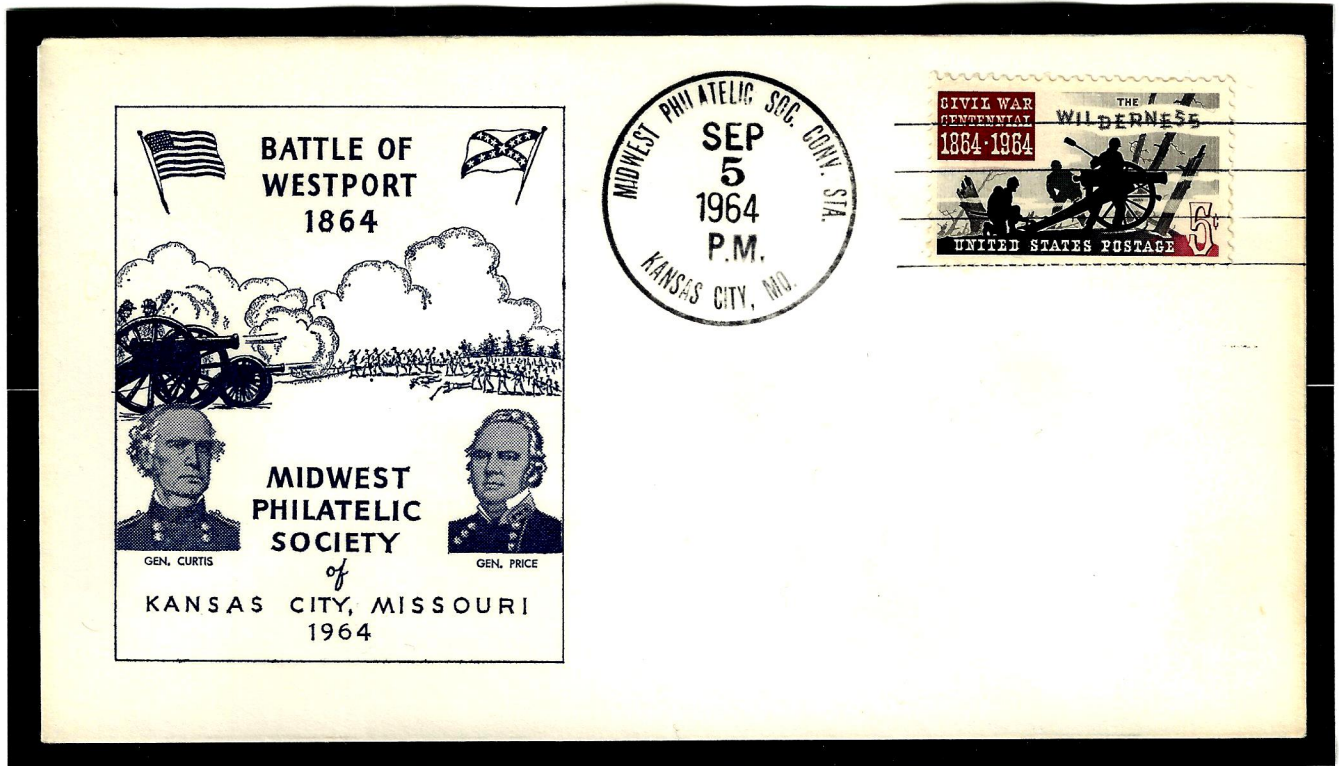


1963



This cover was issued at the 1963 show and it honors the rich history of Westport.

# 1964



## Battle of Westport

Special cachet and cancellation seal reading:

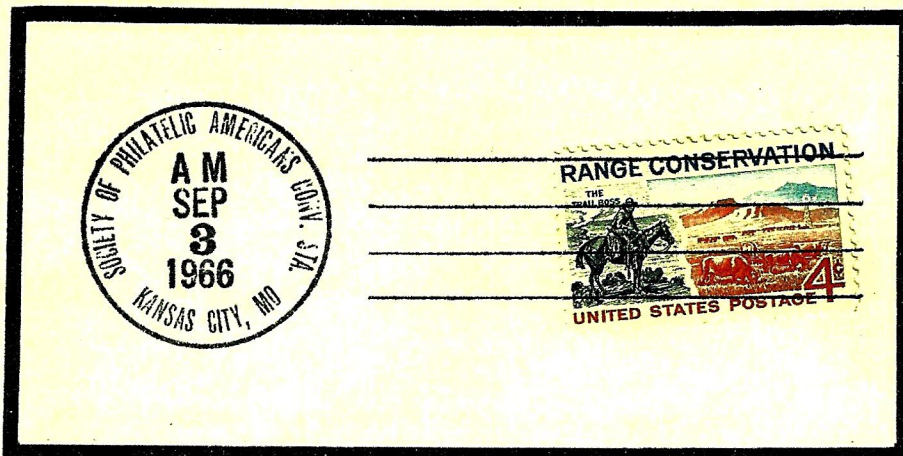
**Midwest Philatelic Society Conv.(ention) Sta.(tion)**



**Date 1962**

Our sincere thanks to those MPS members who have donated the actual or copies of philatelic items related to Midwest Philatelic Society displayed on these pages.

It is our aim to update this exhibition, and therefore will appreciate any new information or material related to MPS.



*Souvenir of the 72nd Annual Convention of the Society of Philatelic Americans, presenting the stamp, "The Trail Boss", as sketched by Charles M. Russell (Scott's No. 1176). It bears the official post office cancellation of this Convention.*

*In the original sketch, the cattle were shown as the gaunt, long-horned type of that date. Now the picture has changed, and on this stamp are the fine, registered cattle that we see on the ranges in this area. This has made Kansas City famous as the home of the American Royal.*

*Adolph R. Pearson, Secretary-Treasurer  
Midwest Philatelic Society, Presiding*

Invocation ..... Dr. Thomas B. Mather,  
Associate Minister,  
Central Methodist Church

*Introduction of Guests*

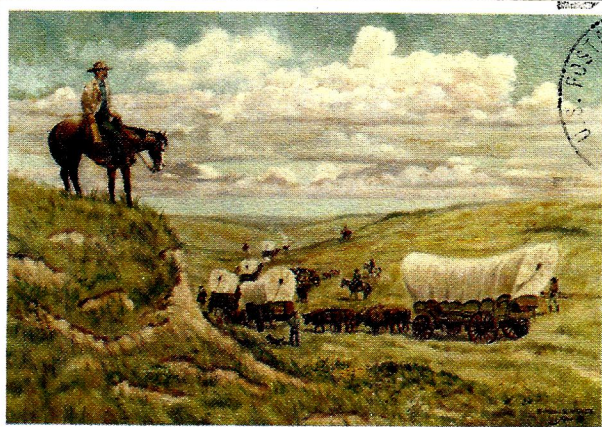
Welcome ..... Monte J. Brown, Vice President  
Midwest Philatelic Society  
Remarks ..... Officers and Guests of  
Society of Philatelic Americans  
Presentation of Awards ..... Robert B. Sapp, Jr.,  
Exhibition Chairman and  
Director of S.P.A.

*Sale of oil painting, "Where the West Begins," by Byron B. Wolfe.*

*(Retain this Program for your Philatelic Album)*

*Norman Herz, Jr.*  
*Jan Maligh Mrs*  
*Bruce T. Egan*  
(Autographs)

1975



MIDWEST PHILATELIC SOCIETY

*"Where the West Begins"*

GOLDPEX MIDAPHIL '75  
Kansas City, Mo.  
September 19, 20 and 21, 1975

1010 BALTIMORE  
KANSAS CITY, MISSOURI 64105

Mr. Joseph Firestone,  
8219 Cherokee Circle,  
Leawood, Kansas 66206

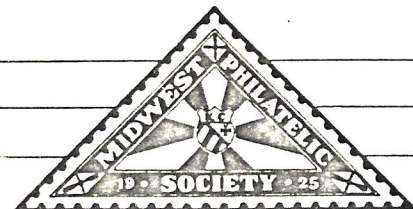
According to what I have been able to discover this cover was the last souvenir issued by the Midwest Philatelic Society. On the following page is a folder that was distributed with the envelope.



# MIDWEST PHILATELIC SOCIETY, INC.

50 Years of Philately  
1925--1975

Hotel Muehlebach, Kansas City, Missouri 64105



## OFFICIAL CACHET

### 42nd Annual Convention, Trans-Mississippi Philatelic Society

Plaza Inn / Kansas City, Mo. / Sept. 19, 20, 21, 1975

The original oil painting appearing on this cachet was painted by Byron B. Wolfe, famous artist of Western Americana, now deceased. The painting was commissioned by the Midwest Philatelic Society and appeared on the cachet issued in 1966 at the time of hosting the 72nd Annual Convention of the Society of Philatelic Americans.

As the demand for this souvenir cover far exceeded the supply, it was considered to

be most timely that in recognition of the Bicentennial of our nation we again should reprint this famous painting, showing the pioneers in their caravan of covered wagons starting on the long trail that led to the development of the West.

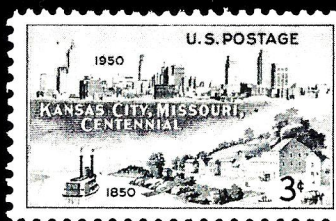
During the last 25 years three stamps have been issued illustrating historic events that have taken place in this Midwest area, for which we are extremely grateful as we celebrate our Bicentennial.

#### AFFILIATED WITH

American Philatelic Society  
Chapter 10

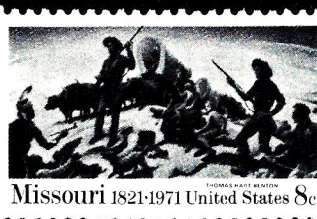
Society of Philatelic Americans  
Chapter 120

Trans-Mississippi Philatelic Society  
Chapter 24



**Issued June 3, 1950**

Honors the Centennial of Kansas City, Mo., showing the Westport Landing of 1850 and the 1950 skyline of Kansas City.



**Issued May 8, 1971**

In recognition of the 150th Anniversary of Missouri. This mural "Independence and the Opening of the West" was painted by Thomas Hart Benton and appears in the Harry S Truman Library.



**Issued May 31, 1954**

Commemorates the centenary of the establishment of the Kansas Territory. Departing from Old Westport the pioneers drove onward to develop the Golden West.

Convention Hosted by Midwest Philatelic Society  
Golden Anniversary Year 1925-1975  
TMPS CHAPTER 24

Collectors Club of Kansas City  
Fourth Annual Exhibition  
TMPS CHAPTER 91